

# PLEXO™

With you, whatever the weather



GLOBAL SPECIALIST IN ELECTRICAL AND  
DIGITAL BUILDING INFRASTRUCTURES

 **legrand®**

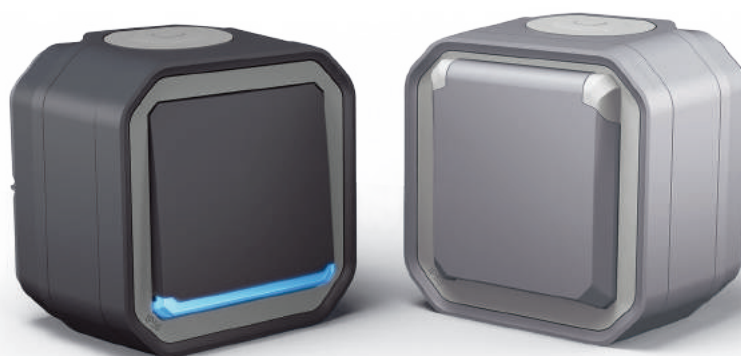


# An **iconic** name, A **contemporary** design

**The go-to range of weatherproof wiring accessories**, Plexo has adopted **current trends** with **contemporary lines**.

A design with character.

A strong offer.



# Plexo™ style

## something to suit every taste

The range has been expanded to **3 finishes** to fit in with every trend in any location.

You will find a colour **to suit all your projects**, both indoors and outdoors.



### Contemporary



### Anthracite





**Essential**



**Grey**

**Pure**



**White**

# Plexo™ **LEGRAND PATENT**

## freedom of installation

**Plexo has been updated** with a redesigned product architecture. Discover the new plate concept with shallow depth and **space** around the mechanism, making **wiring easier**.



## Guaranteed ease of installation



- Twice as much wiring space.
- Even simpler to install.
- Freedom of movement when wiring or creating tap-offs.







## Toolless

A movable mechanism.

## Wire up products as you please

2 possible wiring modes.

### Mechanism not clipped in place



Clips in and out without tools

### Mechanism clipped in place



Wiring done off the plate and mechanism simply clips in place.



Wiring made easy by the plate's shallow depth.

# Plexo™ complete surface mounting IP 55

## switches and push-buttons



0 697 22L



0 697 61L



0 697 55L



0 697 19L



0 697 26L



0 697 89L

Mechanisms supplied complete with non-clipped frame

Mechanisms supplied complete with non-clipped frame

Pack	Cat.Nos	Switches 10 AX - 250 V~
10	0 697 11L	<b>Two-way switch</b> IP 55 - IK 08. Automatic terminals ● Grey ● Anthracite ○ White
10	0 697 61L	
10	0 697 51L	
10	0 697 12L	<b>Two-way switch - with indicator</b> Supplied with 230 V~ lamp to be wired with a terminal block ● Grey ● Anthracite
10	0 697 21L	
5	0 697 13L	<b>Illuminated two-way switch</b> Supplied with 230 V~ lamp to be wired ● Grey ● Anthracite
5	0 697 36L	

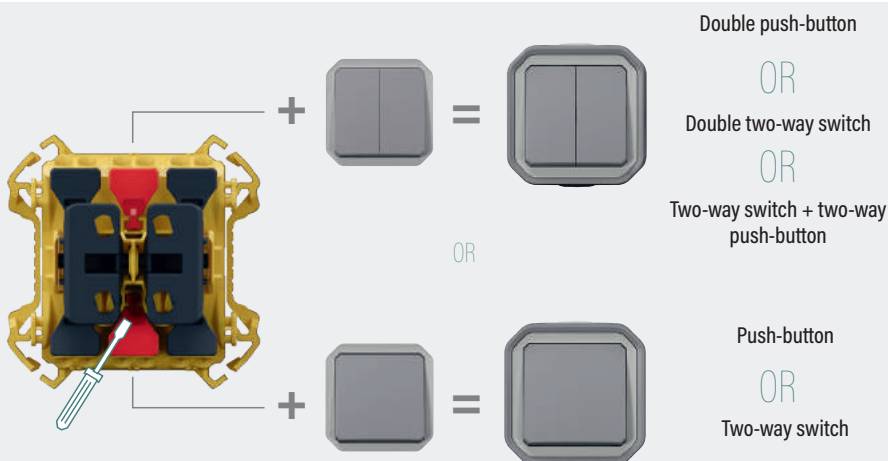
Pack	Cat.Nos	Switches 10 AX - 250 V~
5	0 697 26L	<b>Double pole switch - with indicator</b> ● Grey
5	0 697 16L	<b>Intermediate switch</b> ● Grey ● Anthracite ○ White
5	0 695 21L	
5	0 696 20L	
1	0 697 19L	<b>Reversible transformer</b> IP 55 - IK 08. Automatic terminals Allows to create 5 functions: - a two-way switch or changeover push-button - a 2-gang two-way switch or 2-gang changeover push-button - a two-way switch + changeover push-button (left or right) Supplied as a 2-gang changeover push-button with two mounted half cover plates Supplied with 1 cover plate and 2 half cover plates ● Grey ● Anthracite
1	0 697 89L	

Pack	Cat.Nos	2-gang switch/push-button - 10 AX - 250 V~
10	0 697 15L	IP 55 - IK 08. Automatic terminals Supplied as a 2-gang push-button Allows to create 3 functions: - 2-gang two-way switch - 2-gang changeover push-button - two-way switch + changeover push-button ● Grey ● Anthracite ○ White
10	0 697 75L	
10	0 697 55L	

Pack	Cat.Nos	Push-buttons 10 A
10	0 697 20L	IP 55 - IK 08. Automatic terminals <b>NO contact push-button</b> ● Grey ● Anthracite ○ White
10	0 697 90L	
10	0 697 60L	
10	0 697 22L	<b>Illuminated NO contact push-button</b> Supplied with 230 V~ lamp to be wired ● Grey ● Anthracite ○ White
10	0 697 82L	
10	0 697 62L	

### Transformer: a 5 in 1 product

5 lighting controls can be created:





# Plexo™ complete surface mounting IP 55

## socket outlets



0 697 43L



0 697 31L



0 697 32L

IP 55 - IK 08. Mechanisms supplied complete with non-clipped frame

Pack	Cat.Nos	German standard socket outlets - 16 A - 250 V~
		With shutters for child protection Supplied with 1 membrane gland - 2 outputs
		<b>2P+E socket outlets - automatic terminals</b>
10	0 697 30L	● Grey
10	0 697 99L	● Anthracite
10	0 697 70L	○ White
		<b>2P+E socket outlets - screw terminals</b>
10	0 697 33L	● Grey
10	0 697 83L	● Anthracite
10	0 697 71L	○ White
		<b>Prewired German standard socket outlets - 16 A - 250 V~</b>
		Only one connection required
5	0 697 42L	● Grey - horizontal mounting
5	0 697 72L	○ White - horizontal mounting
5	0 697 44L	● Grey - vertical mounting
5	0 697 43L	<b>3 x 2P+E socket outlets - screw terminals</b> ● Grey - horizontal mounting
5	0 697 46L	<b>2P+E socket outlet + 2-way switch - screw terminals</b> ● Grey - horizontal or vertical mounting

IP 55 - IK 08. Mechanisms supplied complete with non-clipped frame

Pack	Cat.Nos	French standard socket outlets - 16 A - 250 V~
		With shutters for child protection Supplied with 1 membrane gland - 2 outputs
		<b>2P+E socket outlets - automatic terminals</b>
10	0 697 31L	● Grey
10	0 697 91L	● Anthracite
10	0 697 81L	○ White
		<b>Prewired French standard socket outlets - 16 A - 250 V~</b>
		Only one connection required. Horizontal mounting
5	0 697 68L	● Grey
5	0 697 88L	● Anthracite
5	0 697 78L	○ White
5	0 697 63L	<b>3 x 2 P+E socket outlets - automatic terminals</b> ● Grey
		<b>British standard socket outlets - 13 A - 250 V~</b>
		<b>Socket outlets - screw terminals</b>
10	0 697 32L	● 2P+E - Grey
10	0 697 39L	● 2 x 2P+E - Grey
10	0 697 50L	● 2P+E + 2-way switch - Grey
		<b>Multistandard socket outlet</b>
		<b>2P+E - screw terminals</b>
10	0 697 48L	● Grey
		<b>Membrane glands with marking of Ø for tubes and cables</b>
50	0 919 14	● Grey (RAL 7035) Up to Ø20
50	0 919 15	Up to Ø25

# Plexo™ complete flush-mounting IP 55

## switches and push-buttons



0 698 15L



0 698 20L



0 698 32L



0 698 81L

Mechanisms supplied complete with non-clipped frame, For flush mounting box, please refer to page 20

Pack	Cat.Nos	Switches 10 AX - 250 V~
10	0 698 11L	<b>Two-way switch - automatic terminals</b> ● Grey ● Anthracite ○ White
10	0 698 81L	
10	0 698 51L	
10	0 698 20L	<b>Push-buttons 10 A</b> <b>NO contact push-button</b> ● Grey
10	0 698 32L	<b>Illuminated NO contact push-button</b> Supplied with 230 V~ lamp to be wired ● Grey ○ White
10	0 698 23L	
10	0 698 15L	<b>2-gang switch/push-button - 10 AX - 250 V~</b> Automatic terminals Supplied as a 2-gang changeover push-button Allows to create 3 functions: - 2-gang two-way switch - 2-gang changeover push-button - two-way switch + changeover push-button ● Grey ○ White
10	0 698 55L	

Pack	Cat.Nos	Push-buttons 10 A
5	0 698 24L	Automatic terminals <b>Illuminated changeover push-button with label-holder</b> NO + NC contact Supplied with 12 V~ to be wired Can be equipped with 230 V~ lamp Cat.No 0 694 96L ● Grey ● Anthracite ○ White
5	0 698 54L	
5	0 698 64L	
10	0 698 32L	<b>Illuminated NO contact push-button</b> Supplied with 230 V~ lamp to be wired ● Grey ○ White
10	0 698 23L	

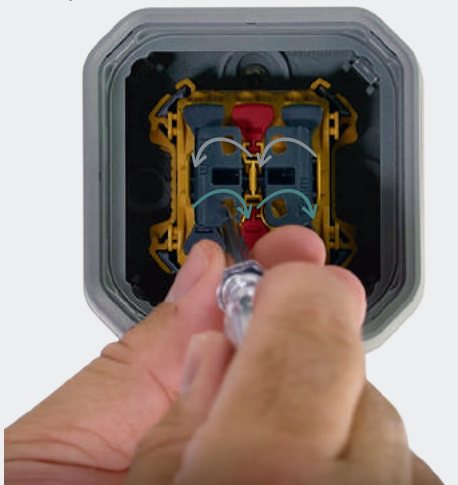
INNOVATIVE



SMART



Push-button mode  
Two-way switch mode



Mode changed with a 1/4 turn

## Double switch: a 3 in 1 product

The double switch contains 3 functions:

Double push-button

OR

Double two-way switch

OR

Two-way switch +  
two-way push-button



# Plexo™ complete flush-mounting IP 55

## socket outlets and cable outlets



0 698 31L



0 698 88L


IP 55 - IK 08. Mechanisms supplied complete  
For flush mounting box, please refer to page 20

Pack	Cat.Nos	French standard socket outlet - 16 A - 250 V~
10	0 698 31L	<b>Automatic terminals</b> 2P+E with shutters for child protection  <ul style="list-style-type: none"> <li>● Grey</li> <li>● Anthracite</li> <li>○ White</li> </ul>
10	0 698 60L	
10	0 698 70L	

Pack	Cat.Nos	German standard socket outlets - 16 A - 250 V~
10	0 698 33L	<b>2P+E - screw terminals</b>  <ul style="list-style-type: none"> <li>● Grey</li> <li>● Anthracite</li> <li>○ White</li> </ul>
10	0 698 59L	
10	0 698 69L	

10	0 698 34L	<b>2P+E - with claws</b>  <ul style="list-style-type: none"> <li>● Grey</li> <li>○ White</li> </ul>
10	0 698 68L	

Pack	Cat.Nos	Cable outlets
10	0 698 48L	<b>Cable outlet 16 A - 250 V~</b> Supplied with cable grip Ø 5 to 13 mm (3 x 2,5²)  <ul style="list-style-type: none"> <li>● Grey</li> <li>● Anthracite</li> <li>○ White</li> </ul>
10	0 698 78L	
10	0 698 88L	

1	0 698 49L	<b>Cable outlet 20 A with terminal block</b> Equipped with 3 entry terminals (2.5 mm²) and 3 front terminals for easy wiring  <ul style="list-style-type: none"> <li>● Grey</li> <li>● Anthracite</li> <li>○ White</li> </ul>
1	0 698 99L	
1	0 698 89L	

1	0 698 50L	<b>Cable outlet 20 - 32 A</b> ISO 32 : Ø12 to 25 mm  <ul style="list-style-type: none"> <li>● Grey</li> </ul>
---	-----------	--



# Plexo™ mechanisms IP 55

## switches



0 698 00L



0 695 11L



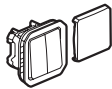
0 696 25L



0 695 26L

Mechanisms supplied with cover plate  
Installation with surface mounting boxes or flush-mounting support frames (page 18)

Pack	Cat.Nos	Reversible transformer
1	0 695 06L	IP 55 - IK 08. Automatic terminals Allows to create 5 functions: - a two-way switch or changeover push-button - a 2-gang two-way switch or 2-gang changeover push-button - a two-way switch + changeover push-button (left or right) Supplied as a 2-gang changeover push-button with two mounted half cover plates Supplied with 1 cover plate and 2 half cover plates
1	0 698 00L	
1	0 696 18L	



- Grey
- Anthracite
- White

Pack	Cat.Nos	Switches 10 AX - 250 V
10	0 695 11L	IP 55 - IK 08. Automatic terminals <b>Two-way switch</b> ● Grey ● Anthracite ○ White
10	0 698 01L	
10	0 696 11L	
5	0 695 12L	<b>Two-way switch - with indicator</b> Supplied with 230 V~ lamp to be wired with a terminal block ● Grey ● Anthracite ○ White
5	0 698 02L	
5	0 696 12L	
5	0 695 13L	<b>Illuminated two-way switch</b> Supplied with 230 V~ lamp to be wired ● Grey ● Anthracite ○ White
5	0 698 03L	
5	0 696 13L	
10	0 695 30L	<b>Double pole switch</b> Becomes illuminated with lamp Cat.No 0 694 96L (p. 40) Indicator version with lamp Cat.No 0 694 98L (p. 40) to be wired with terminal block ● Grey ● Anthracite ○ White
10	0 698 27L	
10	0 696 27L	



Pack	Cat.Nos	Switches 16 A - 250 V~
5	0 695 23L	IP 55 - IK 08. Automatic terminals <b>Two-way switch</b> ● Grey
5	0 695 27L	
1	0 695 28L	<b>Double pole switch</b> ● Grey
1	0 695 28L	<b>Double pole switch - with indicator</b> ● Grey Supplied with 230 V~ lamp to be wired with a terminal block



1	0 695 15L	<b>Two-way switch without neutral - with indicator</b> IP 55 - IK 07 4 AX 60 W mini - 1500 W maxi Supplied with 230 V~ lamp ● Grey
---	-----------	---



Pack	Cat.Nos	Contactless switches
1	0 695 86L	<b>200 W LED - for light</b> ● Grey
1	0 695 95L	<b>1000 VA - for door</b> ● Grey



Pack	Cat.Nos	2-gang switches/push-buttons - 10 AX - 250 V~
10	0 695 25L	IP 55 - IK 08. Automatic terminals Supplied as a 2-gang push-button Allows to create 3 functions: - 2-gang 2-way switch - 2-gang changeover push-button - two-way switch + changeover push-button <b>2-gang two-way switch or 2-gang changeover push-button</b> ● Grey ● Anthracite ○ White
10	0 698 05L	
10	0 696 25L	
5	0 695 26L	<b>Illuminated 2-gang two-way switch or 2-gang changeover push-button</b> Supplied with 230 V~ lamp to be wired ● Grey ● Anthracite ○ White
5	0 698 06L	
5	0 696 26L	
5	0 695 21L	<b>Intermediate switch</b> IP 55 - IK 07 ● Grey ○ White
5	0 696 20L	



## Plexo™ mechanisms IP 55

### push-buttons



0 696 30L



0 695 44L

Mechanisms supplied with cover plate  
Installation with surface mounting boxes or flush-mounting support frames (page 18)

Pack	Cat.Nos	Push-buttons 10 A
		IP 55 - IK 08 Automatic terminals
		<b>NO contact push-button</b>
10	0 695 40L	● Grey
10	0 698 10L	● Anthracite
10	0 696 30L	○ White
		<b>NO contact push-button - with indicator</b>
5	0 695 33L	Supplied with 230 V~ lamp to be wired with a terminal block ● Grey
		<b>Illuminated NO contact push-button</b>
		Supplied with 230 V~ lamp to be wired
5	0 695 42L	● Grey
5	0 698 13L	● Anthracite
5	0 696 32L	○ White
		<b>Changeover push-button</b>
		NO + NC contact
5	0 695 41L	● Grey
5	0 698 41L	● Anthracite
5	0 696 31L	○ White
		<b>Illuminated changeover push-button</b>
		NO + NC contact Supplied with 230 V~ lamp to be wired
5	0 695 36L	● Grey
5	0 698 16L	● Anthracite
5	0 696 16L	○ White
		<b>Illuminated changeover push-button with label-holder</b>
		NO + NC contact Supplied with 12 V~ lamp to be wired Can be equipped with 230 V~ lamp Cat.No 0 694 96L (p. 40)
5	0 695 44L	● Grey
5	0 698 14L	● Anthracite
5	0 696 34L	○ White

## Plexo™ mechanisms IP 55

### keyswitches, time lag switch and light sensitive switch



0 695 34L



0 698 04L  
+ surface mounting box 0 696 01L



0 695 17L

Mechanisms supplied with cover plate  
Installation with surface mounting boxes or flush-mounting support frames (page 18)

Pack	Cat.Nos	Keyswitches 3 A - 250 V - Ronis n° 455
		Supplied with a set of 2 RONIS keys n° 455 Keys removable in all positions 2 NO contacts
1	0 695 34L	2 positions marked "0 - I" ● Grey
1	0 695 35L	3 positions marked "I - 0 - II" ● Grey
		<b>Keyswitch and key-operated push-button "secure access"</b>
		IP 20 - IK 07 10 A - 250 V To be equipped with European key barrel Cat.No 0 697 95
		<b>2-position keyswitch</b>
1	0 697 06L	1 contact - 2 poles Key extracted in central position without changing the status of the contacts ● Grey
		<b>3-position key-operated push-button</b>
1	0 697 05L	Changeover switch with OFF position ● Grey
		<b>Accessory</b>
1	0 697 95	European standard key barrel Key extracted in 0 position Supplied with one set of 3 keys
		<b>Illuminated time lag switch 230 V~</b>
		IP 55 - IK 07 Without neutral - 2-wire - screw terminals Lighting or heating control with switch-off timer Possibility to install several time lag switches on the same circuit Supplied with lamp Temporization: 25 s to 15 min. Maximum loads: - 1000 W incandescent - 400 W halogen 130 V - 400 VA ELV halogen lamps - 400 VA fluorescent lamps - 1840 W resistive (heating)
1	0 695 04L	● Grey
1	0 698 04L	● Anthracite
1	0 696 04L	○ White
		<b>Light sensitive switch</b>
		IP 55 - IK 08 Screw terminals Can be used to switch a lighting circuit "ON" and "OFF" based on light conditions (nightfall, daybreak) Supplied in one piece, including photoelectric cell Maximum loads: - 1400 W incandescent - 500 VA fluorescent tubes - 200 VA LEDs Adjustable light level threshold: 2 to 1500 lux Can be combined with all finishes of surface mounting boxes and support frames (p. 39)
1	0 695 17L	

## Plexo™ mechanisms IP 55

### motion sensors



0 695 20L



0 401 49

Mechanisms supplied with cover plate  
Installation with surface mounting boxes or flush-mounting support frames (page 18)

Pack	Cat.Nos	Motion sensors
1	0 695 20L	<p>Sensors without override Compatible with any type of lamp IR detection, detection field 170° Detection range 8 m Time delay setting from 5 s to 30 min Light level threshold setting from 5 to 1275 lux 4 levels of sensitivity setting Standby consumption : 0.01 W</p> <p><b>Motion sensor, 2 wires, without neutral</b> Accepted power by lamp type : - LEDs: 2 to 100 W - Compact fluorescent : 2 to 100 W - Halogens, incandescent: 2 to 150 W - LEDs, CFLs, Halogen, fluo tube with ferromagnetic or electronic transformer: 2 to 150 VA If several sensors are installed on the same circuit, the minimum load changes: refer to the technical sheet Possibility to install up to 3 sensors in parallel Additional remote manual control possible with push button, 10 max. Can be associated with a time-lag switch (p. 34) Accepted power by lamp type will be power of the time-lag switch used.</p>
1	0 695 22L	<p><b>Motion sensor, 3 wires, with neutral</b> Accepted power by lamp type : - LEDs: 0 to 500 W - Compact fluorescent: 0 to 500 W - Halogens, incandescent: 0 to 2000 W - LEDs, CFLs, Halogen, fluo tube with ferromagnetic or electronic transformer: 0 to 1000 VA Possibility to install up to 10 sensors in parallel Additional remote manual control possible with push button, 10 max. Master/Slave function available (10 slaves max. for 1 master)</p>
1	0 401 49	<p><b>Active power compensator</b> Ensures compatibility of 2-wire electronic lighting controls without neutral with all available types of loads (LEDs, compact fluorescent lamps, ELV halogen lamps with electronic or ferromagnetic ballast, 230 V halogen lamps, fluorescent tubes, incandescent lamps) Standby consumption: 1.2 W</p>

## Plexo™ mechanisms IP 55

### roller blind and ventilation controls



0 696 29L



0 695 08L

Mechanisms supplied with cover plate  
Installation with surface mounting boxes or flush-mounting support frames (page 18)

Pack	Cat.Nos	Roller blind controls
1	0 695 38L	<p>IP 55 - IK 06 <b>Switch</b> For direct control of 6 AX - 250 V - 500 W max. blind, awning or canopy motor</p> <p>● Grey ● Anthracite ○ White</p>
1	0 698 98L	
1	0 696 29L	
1	0 695 39L	<p><b>Push-button</b> For controlling 6 A - 250 V - 500 W max. blind, awning or canopy motor by electronic box</p> <p>● Grey ○ White</p>
1	0 696 38L	
1	0 695 08L	<p><b>Electronic room thermostat</b> IP 55 - IK 07 - 250 V~ Ensures the regulation of the temperature in wet premises or specific use (e.g. workshops, laboratories, greenhouses, etc.) Adjustable range from 10°C to 30°C Equipped with a push-button for summer/winter function</p> <p>● Grey</p>



# Plexo™ mechanisms IP 55

German standard and British standard socket outlets, cable outlet and blanking plate



0 695 70L



0 695 50L



0 696 37L

Mechanisms supplied with cover plate  
Installation with surface mounting boxes or flush-mounting support frames (page 18)

## Pack Cat.Nos German standard socket outlets 16 A - 250 V~

Pack	Cat.Nos	IP 55 - IK 08
10	0 695 70L	<b>2P+E - automatic terminals</b> <ul style="list-style-type: none"> <li>● Grey</li> <li>● Anthracite</li> <li>○ White</li> </ul>
10	0 698 71L	
10	0 696 40L	
10	0 695 71L	<b>2P+E - screw terminals</b> <ul style="list-style-type: none"> <li>● Grey</li> <li>● Anthracite</li> <li>○ White</li> </ul>
10	0 698 39L	
10	0 696 39L	
1	0 695 74L	<b>2P+E - key-operated - automatic terminals</b> <ul style="list-style-type: none"> <li>● Grey</li> </ul>

## Prewired German standard socket outlets 16 A - 250 V~

Pack	Cat.Nos	Automatic terminals One-piece mechanism, only one connection required
5	0 695 76L	<b>2 x 2P+E - horizontal mounting</b> <ul style="list-style-type: none"> <li>● Grey</li> <li>● Anthracite</li> <li>○ White</li> </ul>
5	0 698 79L	
5	0 696 75L	
5	0 695 77L	<b>2 x 2P+E - vertical mounting</b> <ul style="list-style-type: none"> <li>● Grey</li> </ul>
5	0 695 78L	<b>3 x 2P+E - horizontal mounting</b> <ul style="list-style-type: none"> <li>● Grey</li> </ul>

## Pack Cat.Nos British standard socket outlet 13 A - 250 V~

Pack	Cat.Nos	IP 55 - IK 08
10	0 695 85L	<b>2P+E - screw terminals</b> <ul style="list-style-type: none"> <li>● Grey</li> </ul>
5	0 695 50L	<b>Cable outlet</b> IP 55 - IK 08 16 A - 250 V Supplied with cable grip Ø5 to 13 mm (3 x 2,5°) <ul style="list-style-type: none"> <li>● Grey</li> </ul>
5	0 695 37L	<b>Blanking plate</b> Allows to conceal free space Compatible with surface mounting boxes and support frames <ul style="list-style-type: none"> <li>● Grey</li> <li>● Anthracite</li> <li>○ White</li> </ul>
5	0 698 37L	
5	0 696 37L	

# Plexo™ mechanisms IP 55

## French standard socket outlets



Mechanisms supplied with cover plate  
Installation with surface mounting boxes or flush-mounting support frames (page 18)

Pack	Cat.Nos	French standard socket outlets 16 A - 250 V~
10	0 695 51L	IP 55 - IK 08 Equipped with a flap <b>2P+E with shutters - automatic terminals</b> ● Grey ● Anthracite ○ White
10	0 698 91L	
10	0 696 21L	
10	0 695 52L	<b>2P+E with shutters - screw terminals</b> ● Grey ● Anthracite ○ White
10	0 698 40L	
10	0 696 24L	
5	0 695 53L	<b>2P+E tamperproof - screw terminals</b> ● Grey ○ White
5	0 696 23L	

10	0 502 99	<b>Tamperproof insert for Cat.Nos 0 695 53L and 0 696 23L</b> Tamperproof insert for socket Fits directly into the plug
----	----------	---

Pack	Cat.Nos	Prewired French standard socket outlets 16 A - 250 V~
10	0 695 62L	IP 55 - IK 08 Automatic terminals Only one connection required <b>2 x 2P+E - horizontal mounting</b> ● Grey ● Anthracite ○ White
10	0 698 42L	
10	0 696 42L	
10	0 695 63L	<b>2 x 2P+E - vertical mounting</b> ● Grey ● Anthracite ○ White
10	0 698 43L	
10	0 696 43L	
5	0 695 64L	<b>3 x 2P+E - horizontal mounting</b> ● Grey ● Anthracite ○ White
5	0 698 44L	
5	0 696 44L	

Pack	Cat.Nos	French standard RCD socket outlet 16 A - 250 V~
1	0 695 67L	IP 55 - IK 08 Protects against electric shocks (overload and overvoltage) Equipped with: - a 2P+E French standard socket outlet with flap - 16 A - 250 V~ - with shutters for child protection - a Residual Current Device (RCD) 16 A - 230 V~ <b>30 mA</b> ● Grey








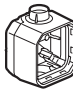



# Plexo™ mechanisms IP 55

surface mounting boxes and flush-mounting support frames







To be equipped with modular Plexo mechanisms (page 12 to 17)

Pack	Cat.Nos	1-gang surface mounting boxes with membrane glands
10	0 696 51L	<p>Equipped with removable membrane glands 2 membrane glands 1 entry</p> <p>● Grey ● Anthracite ○ White</p> 
10	0 696 01L	
10	0 696 89L	
<p><b>2-gang and 3-gang surface mounting boxes with membrane glands</b></p> <p>No separation between compartments in order to facilitate the cabling operations and to allow the installation of prewired socket outlets</p> <p><b>2-gang - horizontal or vertical mounting</b> 3 membrane glands 1 entry 1 membrane gland 2 entries</p> <p>● Grey ● Anthracite ○ White</p> 		
5	0 696 72L	<p><b>3-gang - horizontal or vertical mounting</b> 4 membrane glands 1 entry 1 membrane gland 2 entries</p> <p>● Grey ● Anthracite ○ White</p> 
5	0 696 02L	
5	0 696 90L	

Pack	Cat.Nos	Surface mounting boxes for cable glands
10	0 696 52L	<p><b>1-gang, 1 entry - PG 16</b> ● Grey</p> 
10	0 696 56L	<p><b>1-gang, 1 entry - ISO 20</b> ● Grey ● Anthracite ○ White</p> 
10	0 696 28L	
10	0 696 86L	
10	0 698 46L	<p><b>1-gang, 2 entries - ISO 20</b> ● Grey</p> 
5	0 696 68L	<p><b>2-gang, 2 entries - ISO 20</b></p> <p>For horizontal or vertical mounting The 2-entry cable gland can be positioned at different locations</p> <p>● Grey ● Anthracite ○ White</p> 
5	0 696 10L	
5	0 696 66L	

For flush mounting boxes refer to page 20

Pack	Cat.Nos	Flush-mounting support frames
<p>Used for flush-mounting version for German and French standard boxes only</p> <p><b>1-gang</b> Can be equipped with claws Cat.Nos 0 697 96L/97L</p> <p>● Grey ● Anthracite ○ White</p> 		
10	0 696 81L	<p><b>1-gang - with claws</b> ● Grey ● Anthracite ○ White</p> 
10	0 696 06L	
10	0 696 92L	
5	0 696 83L	<p><b>2-gang - horizontal or vertical mounting</b> 71 mm fixing centers ● Grey ● Anthracite ○ White</p> 
5	0 696 07L	
5	0 696 94L	
5	0 696 87L	<p><b>3-gang - horizontal or vertical mounting</b> 71 mm fixing centers ● Grey ● Anthracite ○ White</p> 
5	0 696 08L	
5	0 696 98L	

# Plexo™ mechanisms IP 55

## membrane glands and accessories



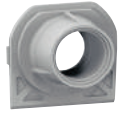
0 695 96L



0 695 99L



0 696 65L



0 696 60L



0 696 50L



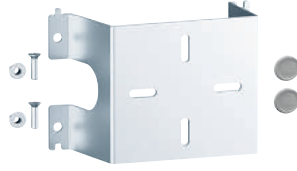
0 694 96L



0 694 98L



0 694 95L



0 694 92L



0 695 97L

Pack	Cat.Nos	Membrane glands
10	0 695 96L	<b>1 entry - Ø up to 25 mm</b> ● Grey
10	0 695 99L	<b>2 entries - Ø up to 12.5 mm</b> ● Grey
10	0 696 65L	<b>For pairing</b> Allows to combine surface mounting boxes with one another for an IP 44 installation ● Grey

Pack	Cat.Nos	Cable glands
10	0 696 60L	<b>1 entry ISO 20</b> ● Grey ● Anthracite ○ White
10	0 696 63L	
10	0 696 62L	
10	0 696 48L	<b>1 entry PG 16</b> ● Grey
10	0 696 70L	<b>2 entries ISO 20</b> ● Grey ● Anthracite ○ White
10	0 696 73L	
10	0 696 71L	
10	0 696 50L	<b>2 entries PG 16</b> ● Grey
10	0 696 53L	<b>PG 16 gland - multidiameter</b> Ø7 to 14 mm

Pack	Cat.Nos	Lamps to be wired
5	0 694 96L	230 V~ - 0.2 mA - blue - locator 230 V~ - 2 mA - blue - indicator 12 to 48 V~ - 2.6 mA (48 V~) - blue
5	0 694 98L	
5	0 694 95L	
5	0 694 92L	<b>Fixing accessories</b> <b>1-gang stainless steel height spacer for sandwich panel</b> Supplied with screw for fixing the product on the height spacer and double insulated caps (Class II) for the wiring accessory
10	0 695 97L	<b>For thin walls</b> Does not require a flush-mounting box
10	0 695 98L	<b>Set of 4 caps</b> For sealing fixing holes when installing a surface mounting box on a metal support ● Grey

## Batibox™

flush-mounting boxes for dry partitions and flush-mounting boxes for masonry



0 800 42



0 801 41

Pack	Cat.Nos
50	0 800 41
30	0 800 42
30	0 800 43

### 1-gang boxes

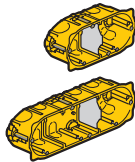
**For 1 gang or 2 modules**  
Drilling diameter 67 mm  
For wiring accessories using screws or claws



### Multi-gang boxes

For wiring equipment using screws  
Drilling diameter 67 mm  
Supplied with 1 removable divider for accommodating extended functions

**For 71 mm fixing centres**  
2-gang or 4/5 modules  
Horizontal or vertical use



### 1-gang boxes for masonry

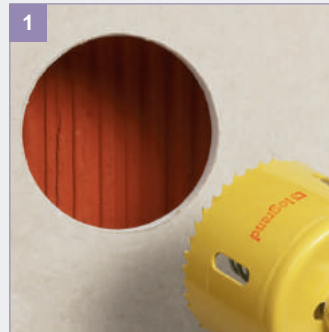
**Square boxes for joining together**  
For wiring accessories using screws or claws  
1-gang boxes can be used to make up multi-gang boxes by joining horizontally or vertically  
Can be used horizontally or vertically  
71 mm fixing centres  
Cutting out of internal partitions for mounting extended functions  
Supplied with screws fitted with protective shield  
Knockout cable entries, Ø16-20-255  
Depth 40 mm



## Batibox™

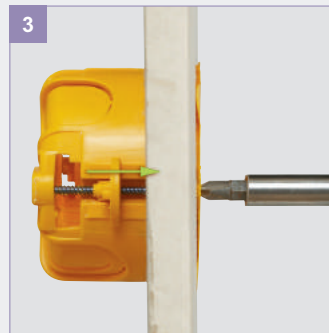
flush-mounting boxes for dry partitions

### Installation



1

Hole cutter saw Ø67  
Box Ø67 mm, more space for cabling



3

Fixing claws adapted to the thickness of the wall  
Automatic positioning, even with an electric screwdriver



2

Retractable fixing claws for a better comfort during installation



4

Large space to improve fixing (according to the drilling Ø67 to 68 mm)

## IP 66 PROTECTION COVER

waterproof cover





6 846 31



6 846 32

Conform to IEC 60526 standard  
Surface mounting, to be equipped with British standard wiring  
accessory ranges  
Grey RAL 7035

Pack	Cat.Nos	IP 66 Boxes
1	6 846 31	<b>1 gang</b>  <ul style="list-style-type: none"> <li>● Grey</li> </ul>
1	6 846 32	<b>2 gang</b>  <ul style="list-style-type: none"> <li>● Grey</li> </ul>

## IP 55 PROTECTION COVER

splashproof cover



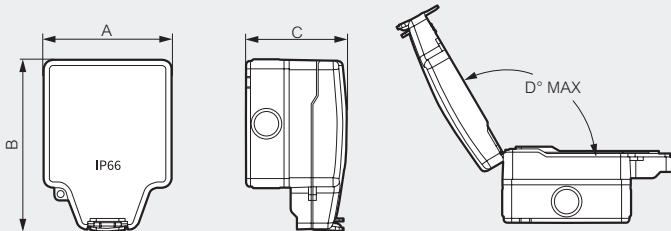
6711311G



6711312G

Pack	Cat.Nos	IP 55 Boxes
1	6711311G	<b>1 gang</b> <ul style="list-style-type: none"> <li>○ Transparent</li> </ul>
1	6711312G	<b>2 gang</b> <ul style="list-style-type: none"> <li>○ Transparent</li> </ul>

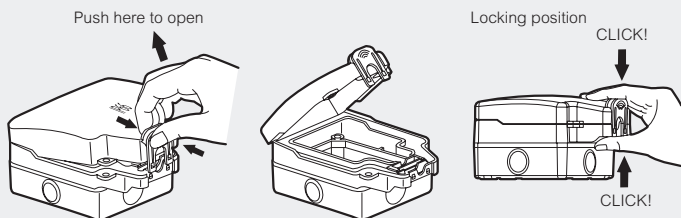
### Dimensions (mm)



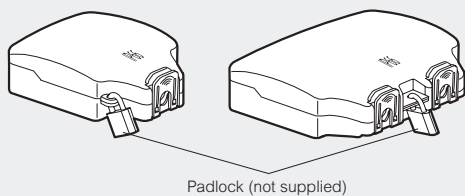
Cat.Nos	A	B	C	D (max)
6 846 31	113.6	151.8	89	120°
6 846 32	169	151.8	89	120°

### Principle of use

Easy to install, intuitive opening and closing position



Possibility of adding a padlock



### Display photo after install socket



\*socket is sold separately



# Notes

---

---

---

---

---

---

---

---

---

---

---

---

---

---

---

---

---

---

---

---

---

---

---

---

---

---

---

---

---

---

---

---

---

---

---

# Notes

---

---

---

---

---

---

---

---

---

---

---

---

---

---

---

---

---

---

---

---

---

---

---

---

---

---

---

---

---




---

---

---



FOLLOW US  
ALSO ON

-  [legrand.com.sg](http://legrand.com.sg)
-  [www.fb.com/legrandsingapore](https://www.facebook.com/legrandsingapore)
-  [youtube.com/user/legrand](https://youtube.com/user/legrand)
-  [linkedin.com  
/company/legrand-s-pte-ltd/](https://linkedin.com/company/legrand-s-pte-ltd/)



**Legrand (S) Pte Ltd**  
17 Neythal Road  
Singapore 628582  
Tel : +65 6416 1550

[www.legrand.com.sg](http://www.legrand.com.sg)