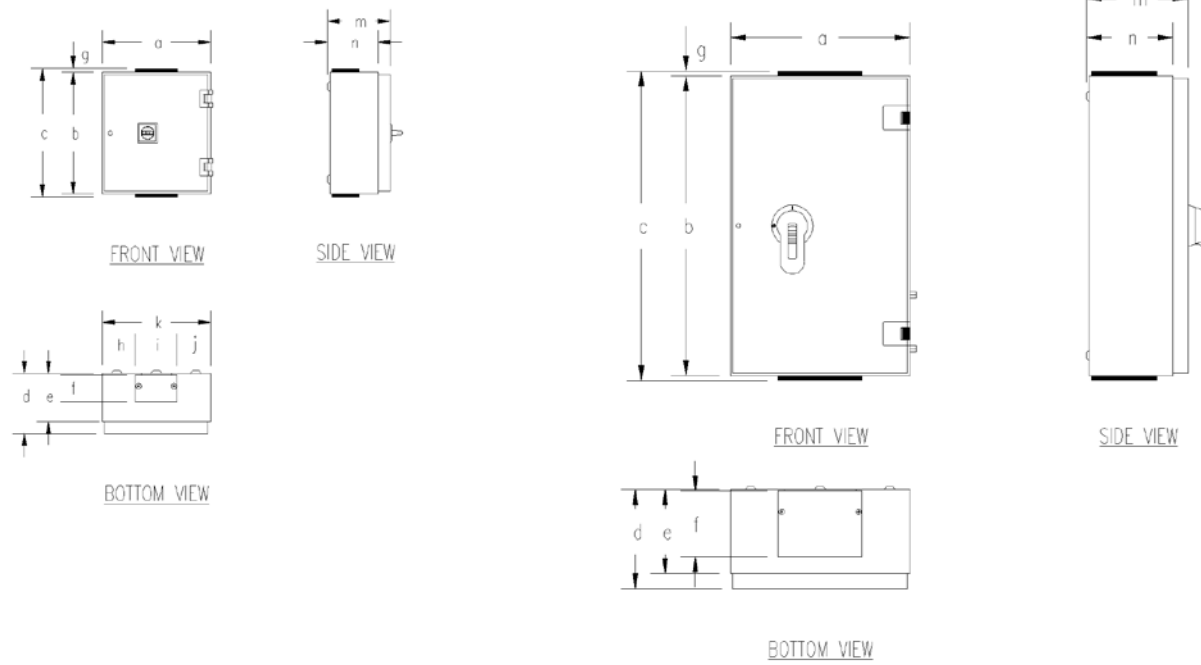


Ordering details

Rated current AC22A	IP 40		IP 54	
	3 + N	4P	3 + N	4P
16	OT16ME3	OT16ME4	OT16W3	OT16W4
25	OT25ME3	OT25ME4	OT25W3	OT25W4
40	OT40ME3	OT40ME4	OT40W3	OT40W3
63	OT63ME3	OT63ME4	OT63W3	OT63W3
80	OT80ME3	OT80ME4	OT80W3	OT80W3
100	OT100ME3	OT100ME4	OT100W3	OT100W3
125	OT125ME3	OT125ME4	OT125W3	OT125W3
160	OT160ME3	OT160ME4	OT160W3	OT160W3
200	OT200ME3	OT200ME4	OT200W3	OT200W3
250	OT250ME3	OT250ME4	OT250W3	OT250W3
400	OT400ME3	OT400ME3	OT400W3	OT400W3

OT 16 - OT 125

OT 160 - OT 400



Dimensions (mm) - IP40

Switch type	a	b	c	d	e	f	g	h	i	j	k	m	n
OT 16 - OT 80	180	200	202.4	100	80	45	2.4	55	70	55	180	105	85
OT 100 - OT 125	200	300	302.4	130	105	60	2.4	40	120	40	200	135	110
OT 160 - OT 250	300	500	502.4	165	140	110	2.4	80	140	80	300	170	145
OT 315 - OT 400	350	580	583	210	185	140	2.4	55	240	55	350	215	190

Dimensions (mm) - IP54

Switch type	a	b	c	d	e	f	g	h	i	j	k	m	n
OT 16 - OT 80	200	250	252.4	145	125	45	2.4	65	70	65	200	150	130
OT 100 - OT 125	250	300	302.4	195	175	60	2.4	65	120	65	250	200	180
OT 160 - OT 250	400	600	602.4	225	205	110	2.4	130	140	130	400	230	210
OT 315 - OT 400	450	680	682.4	270	250	140	2.4	105	240	105	450	275	255

Contact us

ABB Pte Ltd/ABB Ltd

2 Ayer Rajah Crescent
Singapore 139935
Tel: +65 6776 5711 (Main)
+65 6222 7778 (Customer enquiry)
Fax: +65 6778 0222
E-Mail: contact.center@sg.abb.com
www.abb.com/smartgrids

The data and illustrations are not binding.
We reserve the right to make changes in the
course of technical development of the product.

Copyright 2012 ABB.
All rights reserved.

This brochure is printed on paper made from
FSC-certified fibres from well-managed and
controlled sources.



Low Voltage Product Enclosed Load Break Switches

Power and productivity
for a better world™



Power and productivity
for a better world™

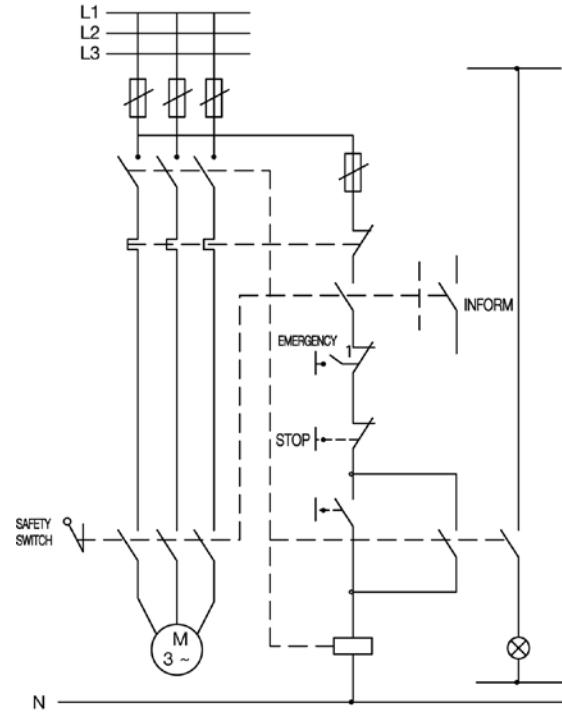


Enclosed 3/4 Pole Load Break Switch

- Main switches
- Local isolators
- Safe switches
- Emergency switches
- Motor control switches

Features

- Wide range
Switch sizes from 25A up to 1600A (details for above 400A, separate request)
– 3-pole with neutral
– 4-pole
- Padlocking with 3 padlocks in OFF-position. Handles padlockable in both ON- and OFF-positions as optional. Door coupling can be defeated through defeater hole by skilled personnel.
- Reliable position indication
- Heavy duty hinges for 180° opening
- Protection degree IP40 on request



Earthing facilities: earth bonding on door and earth bar in enclosure

Technical data according to IEC 60947-3 and IEC 60947-1



Rating	Switch type		OT 16	OT 25	OT 32	OT 45	OT 63	OT 80		OT 100	OT 125	OT 160	OT 200	OT 250	OT 315	OT 400
Rated thermal current / ambient 40 °C	In open air	A	25	32	40	63	80	100		115	125	200	200	250	315	400
	In enclosure	A	25	32	40	63	80	100		115	125	160	200	250	315	400
	In enclosure	A	25	32	40	63	80	100		115	125	160	200	250	315	400
Rated operational current, AC-21A	up to 415V	A	16	25	40	63	80	80		100	125	160	200	250	315	400
	440-690V	A	16	25	40	63	80	80		100	160	160	-	-	-	-
Rated operational current, AC-22A	up to 415V	A	16	25	40	63	80	80		100	125	160	200	250	315	400
	440-500V	A	16	25	40	63	80	80		100	125	160	200	250	315	400
	690V	A	16	25	40	63	80	63		100	125	160	200	250	315	400
Rated operational current, AC-22A	up to 415V	A	16	20	23	45	75	55		80	90	135	200	250	315	400
	440V	A	16	20	23	45	65	51		65	78	125	200	250	315	400
	500V	A	16	20	11	23	45	58		60	70	1.25	200	250	315	400
	690V	A	10	11	12	20	20	20		40	50	80	200	250	315	400
Rated operational power, AC-23A	220-240V	kW	3	4	5.5	11	22	18.5		20	22	45	-	-	-	-
	440-415V	kW	7.5	9	11	22	37	30		37	45	75	110	140	160	220
	440V	kW	7.5	9	11	22	37	30		37	45	75	-	-	-	-
	500V	kW	7.5	9	11	22	37	18.5		37	45	75	-	-	-	-
Rated short-time withstand current R.M.S.-value	690V	kW	7.5	9	11	15	18.5	15		37	45	75	200	250	315	400
	$I_{pw,1s}$	kA	0.5	0.5	0.5	1	1.5	1.5		2.5	2.5	4	8	8	15	5
Rated short circuit making current Peak Value I_{cw}	I_{cw}	kA	0.705	0.705	0.705	1.4	2.1	2.1		2.5	3.6	12	30	30	65	65
	Cable size	Cu-wire size suitable for terminal clamps	mm ²	0.75-10	0.75-10	0.75-10	1.5-35	1.5-35	2.5-50		10-70	10-70	10-70	-	-	-
Terminal bolt size		mm	-	-	-	-	-	-		-	-	-	8x25	10x30	10x30	10x30