



PRODUCT BROCHURE

3VJ Series

Molded Case Circuit Breakers

MARCH 2021

SIEMENS

3VJ SERIES

Molded Case Circuit Breakers



NEW!

SIMPLY EFFICIENT

3VJ Molded Case Circuit Breakers with Thermal Magnetic Trip units offer the perfect solution whether in industrial applications, buildings, infrastructure or utilities.

The 3VJ MCCBs are the efficient choice for cost effective power distribution. It ensures reliable protection of personnel and plants with simple functional features that maximize benefits for users in all segments.

The 3VJ circuit breakers are available with rated operational currents ranging from 20 A to 630 A* and rated voltages up to 415 V. The ranges are available in 1, 2, 3 and 4-pole versions with 10, 18, 25, 36 and 55 kA breaking capacities. 3VJ MCCBs are delivered with 5 frame sizes.

3VJ MCCB conforms to these latest international standards; EN60947-2/2017, IS/IEC60947-2/2016 and pollution degree III.



*630A will launch in the next phase

KEY PRODUCT FEATURES

1 COMPACT
These MCCBs save space in enclosures & switchboards and reduces the overall size of the module.

2 RELIABLE & SAFE
Every piece of this MCCB is designed with the utmost quality for optimal performance. The 4 pole MCCB (100% rated) is perfect to operate in demanding applications.

3 FLEXIBLE
MCCBs come with common foot-prints from 10kA to 55kA breaking capacities and in addition no Neutral pole bias.

4 THE EFFICIENT CHOICE
This excellently crafted MCCB is coupled with user-friendly features and cost-effective solutions for power distribution.

THERMAL MAGNETIC TRIP UNIT

3VJ offers both FTFM and ATFM trip units for all ranges of components. It offers you flexibility as all 4poles are protected so you can use the Neutral configuration (N-RYB or RYB-N) best suited for your application.

Trip Units	Thermal Settings	Magnetic Settings
Fixed Thermal Fixed Magnetic (FTFM)	I_n	$10 I_n$
Adjustable Thermal Fixed Magnetic (ATFM)	$0.8 - 1 I_n$	$10 I_n$

ACCESSORIES

In addition to the basic protection units of 3VJ MCCBs, it also offers accessory components to provide an efficient solution for all your power distribution requirements.

EXTERNAL

All important external accessories including Manual operators with position indicator, Mechanical interlocks, Spreaders, Toggle handle extension and Phase barriers as well as locking devices are available for all 3VJ frame sizes.

INTERNAL

All important internal accessories including Auxiliary and Alarm switches, Shunt trip and Undervoltage releases are available in categories of right and left cavity at different operating voltage levels.

TECHNICAL SPECIFICATIONS



TYPE	3VJ10			3VJ11			
Number of poles	1, 2, 3, 4			2, 3, 4			
Frame Size	125 X			125			
Rated operational current I_n A at 45°C ambient temperature	20 ... 125			25 ... 125			
Rated operational voltage U_e 50/60 Hz AC	V	415			415		
Insulation voltage	V	800			1000		
Impulse voltage	kV	6			8		
Suitable for Isolation	Yes			Yes			
Utilization category, according to IEC60947-2	A			A			
Short-circuit breaking capacities I_{cu} or I_{cs} RMS value, according to IEC60947-2							
I_{cu} @ AC 415 V-50/60 Hz	kA	10	18	25	25	36	55
I_{cs} @ AC 415 V-50/60 Hz	kA	100% of I_{cu}	75% of I_{cu}		75% of I_{cu}		
Trip Units							
Fixed Thermal Fixed Magnetic	FTFM	✓	✓	✓	✓	✓	✓
Adjustable Thermal Fixed Magnetic	ATFM	✓	✓	✓	✓	✓	✓
Neutral Protection in 4P MCCB		100%			100%		
Endurance							
Mechanical		15000			15000		
Electrical 415V AC		5000			5000		
Connection Technology							
Standard Connection Technology		Screw Terminal					
Overall Dimensions							
		1p	2p / 3p / 4p		2p / 3p / 4p		
Width x Depth x Height (mm)		35 x 62 x 118	80 (2p/3p) / 103.5(4p) x 62 x 126		92 (2p/3p) / 122(4p) x 81 x 150		

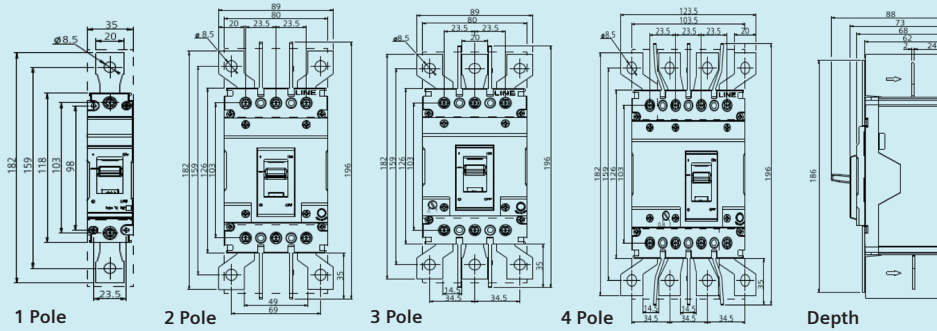
TECHNICAL SPECIFICATIONS



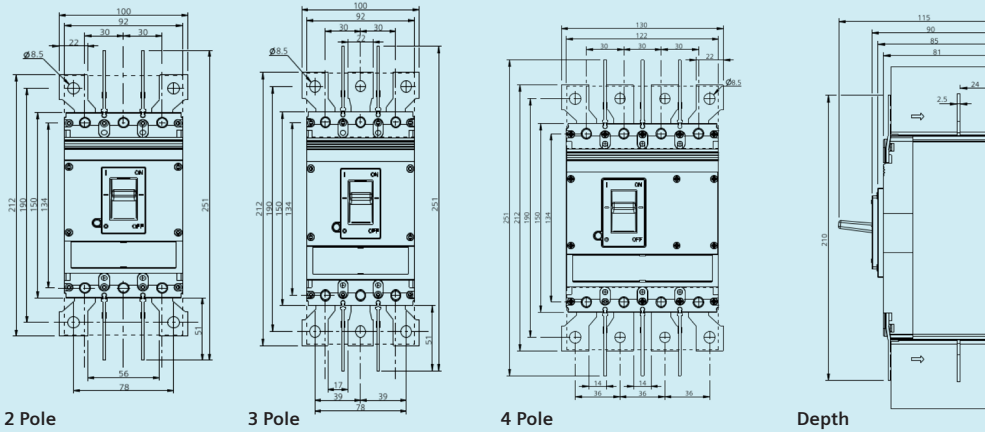
TYPE		3VJ12				3VJ13		
Number of poles		2, 3, 4				3, 4		
Frame Size		250				400		
Rated operational current I_n A at 45°C ambient temperature		160 ... 250				320 ... 400		
Rated operational voltage U_e 50/60 Hz AC	V	415				415		
Insulation voltage	V	1000				1000		
Impulse voltage	kV	8				8		
Suitable for Isolation		Yes				Yes		
Utilization category, according to IEC60947-2		A				A		
Short-circuit breaking capacities I_{cu} or I_{cs} RMS value, according to IEC60947-2								
I_{cu} @ AC 415 V-50/60 Hz	kA	18	25	36	55	25	36	55
I_{cs} @ AC 415 V-50/60 Hz	kA	75% of I_{cu}				75% of I_{cu}		
Trip Units								
Fixed Thermal Fixed Magnetic	FTFM	✓	✓	✓	✓	✓	✓	✓
Adjustable Thermal Fixed Magnetic	ATFM	✓	✓	✓	✓	✓	✓	✓
Neutral Protection in 4P MCCB		100%				100%		
Endurance								
Mechanical		15000				10000		
Electrical 415V AC		5000				4000		
Connection Technology								
Standard Connection Technology		Screw Terminal						
Overall Dimensions								
		2p / 3p / 4p				3p / 4p		
Width x Depth x Height (mm)		107.5 (2p/3p) / 142.5 (4p) x 81 x 166				150 (3p) / 198 (4p) x 104 x 260		

PRODUCT DIMENSIONS

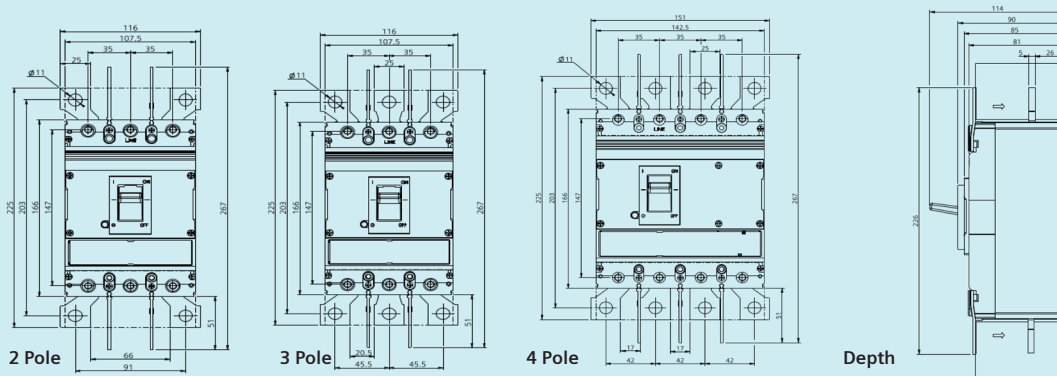
3VJ10



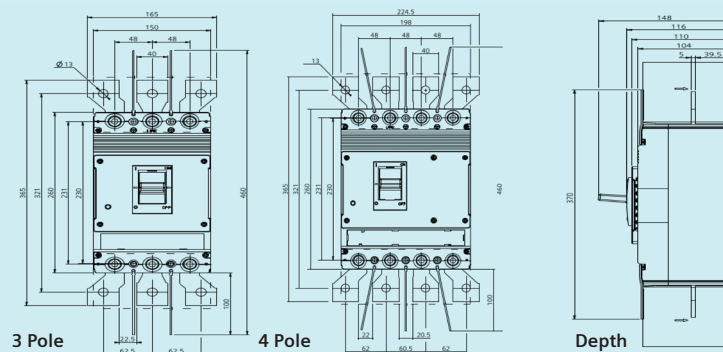
3VJ11



3VJ12



3VJ13



PRODUCT SELECTION

1 Pole Thermal Magnetic Trip Unit Fixed Thermal Fixed Magnetic (FTFM)

240VAC + 50Hz



3VJ10

Frame Size	Nominal Current I_n A	Overload Protection L I_r A	Short-circuit Protection I I_i A	Order Number		
				$I_{cu} = 10kA$ at 240V	$I_{cu} = 18kA$ at 240V	$I_{cu} = 25kA$ at 240V
3VJ10	20	20	500	3VJ1002-0DA12-0AA0	3VJ1002-1DA12-0AA0	3VJ1002-3DA12-0AA0
	25	25	500	3VJ1092-0DA12-0AA0	3VJ1092-1DA12-0AA0	3VJ1092-3DA12-0AA0
	32	32	550	3VJ1003-0DA12-0AA0	3VJ1003-1DA12-0AA0	3VJ1003-3DA12-0AA0
	40	40	550	3VJ1004-0DA12-0AA0	3VJ1004-1DA12-0AA0	3VJ1004-3DA12-0AA0
	50	50	600	3VJ1005-0DA12-0AA0	3VJ1005-1DA12-0AA0	3VJ1005-3DA12-0AA0
	63	63	850	3VJ1006-0DA12-0AA0	3VJ1006-1DA12-0AA0	3VJ1006-3DA12-0AA0
	80	80	850	3VJ1008-0DA12-0AA0	3VJ1008-1DA12-0AA0	3VJ1008-3DA12-0AA0
	100	100	1250	3VJ1010-0DA12-0AA0	3VJ1010-1DA12-0AA0	3VJ1010-3DA12-0AA0
	125	125	1250	3VJ1012-0DA12-0AA0	3VJ1012-1DA12-0AA0	3VJ1012-3DA12-0AA0

Note: Front barriers are included in the standard packing for 1 Pole.

PRODUCT SELECTION

2 Pole Thermal Magnetic Trip Unit Fixed Thermal Fixed Magnetic (FTFM)

415VAC + 50Hz



Frame Size	Nominal Current I_n A	Overload Protection L I_r A	Short-circuit Protection I I_i A	Order Number				
				$I_{cu} = 10kA$ at 415V	$I_{cu} = 18kA$ at 415V	$I_{cu} = 25kA$ at 415V	$I_{cu} = 36kA$ at 415V	$I_{cu} = 55kA$ at 415V
3VJ10	20	20	500	3VJ1002-0DA22-0AA0	3VJ1002-1DA22-0AA0	3VJ1002-3DA22-0AA0	--	--
	25	25	500	3VJ1092-0DA22-0AA0	3VJ1092-1DA22-0AA0	3VJ1092-3DA22-0AA0	--	--
	32	32	550	3VJ1003-0DA22-0AA0	3VJ1003-1DA22-0AA0	3VJ1003-3DA22-0AA0	--	--
	40	40	550	3VJ1004-0DA22-0AA0	3VJ1004-1DA22-0AA0	3VJ1004-3DA22-0AA0	--	--
	50	50	600	3VJ1005-0DA22-0AA0	3VJ1005-1DA22-0AA0	3VJ1005-3DA22-0AA0	--	--
	63	63	850	3VJ1006-0DA22-0AA0	3VJ1006-1DA22-0AA0	3VJ1006-3DA22-0AA0	--	--
	80	80	850	3VJ1008-0DA22-0AA0	3VJ1008-1DA22-0AA0	3VJ1008-3DA22-0AA0	--	--
	100	100	1250	3VJ1010-0DA22-0AA0	3VJ1010-1DA22-0AA0	3VJ1010-3DA22-0AA0	--	--
	125	125	1250	3VJ1012-0DA22-0AA0	3VJ1012-1DA22-0AA0	3VJ1012-3DA22-0AA0	--	--
3VJ11	25	25	600	--	--	--	3VJ1192-5DA22-0AA0	3VJ1192-7DA22-0AA0
	32	32	600	--	--	--	3VJ1103-5DA22-0AA0	3VJ1103-7DA22-0AA0
	40	40	600	--	--	--	3VJ1104-5DA22-0AA0	3VJ1104-7DA22-0AA0
	50	50	600	--	--	--	3VJ1105-5DA22-0AA0	3VJ1105-7DA22-0AA0
	63	63	630	--	--	--	3VJ1106-5DA22-0AA0	3VJ1106-7DA22-0AA0
	80	80	800	--	--	--	3VJ1108-5DA22-0AA0	3VJ1108-7DA22-0AA0
	100	100	1,000	--	--	--	3VJ1110-5DA22-0AA0	3VJ1110-7DA22-0AA0
	125	125	1,250	--	--	--	3VJ1112-5DA22-0AA0	3VJ1112-7DA22-0AA0
3VJ12	160	160	1600		3VJ1216-1DA22-0AA0	3VJ1216-3DA22-0AA0	3VJ1216-5DA22-0AA0	3VJ1216-7DA22-0AA0
	200	200	2000		3VJ1220-1DA22-0AA0	3VJ1220-3DA22-0AA0	3VJ1220-5DA22-0AA0	3VJ1220-7DA22-0AA0
	250	250	2500		3VJ1225-1DA22-0AA0	3VJ1225-3DA22-0AA0	3VJ1225-5DA22-0AA0	3VJ1225-7DA22-0AA0

Note: Phase barriers and Front barriers are included in the standard packing for 2 Pole.

PRODUCT SELECTION

3 Pole Thermal Magnetic Trip Unit Fixed Thermal Fixed Magnetic (FTFM)

415VAC + 50Hz



Frame Size	Nominal Current I_n A	Overload Protection L I_r A	Short-circuit Protection I I_i A	Order Number				
				$I_{cu} = 10kA$ at 415V	$I_{cu} = 18kA$ at 415V	$I_{cu} = 25kA$ at 415V	$I_{cu} = 36kA$ at 415V	$I_{cu} = 55kA$ at 415V
3VJ10	20	20	500	3VJ1002-0DA32-0AA0	3VJ1002-1DA32-0AA0	3VJ1002-3DA32-0AA0	--	--
	25	25	500	3VJ1092-0DA32-0AA0	3VJ1092-1DA32-0AA0	3VJ1092-3DA32-0AA0	--	--
	32	32	550	3VJ1003-0DA32-0AA0	3VJ1003-1DA32-0AA0	3VJ1003-3DA32-0AA0	--	--
	40	40	550	3VJ1004-0DA32-0AA0	3VJ1004-1DA32-0AA0	3VJ1004-3DA32-0AA0	--	--
	50	50	600	3VJ1005-0DA32-0AA0	3VJ1005-1DA32-0AA0	3VJ1005-3DA32-0AA0	--	--
	63	63	850	3VJ1006-0DA32-0AA0	3VJ1006-1DA32-0AA0	3VJ1006-3DA32-0AA0	--	--
	80	80	850	3VJ1008-0DA32-0AA0	3VJ1008-1DA32-0AA0	3VJ1008-3DA32-0AA0	--	--
	100	100	1250	3VJ1010-0DA32-0AA0	3VJ1010-1DA32-0AA0	3VJ1010-3DA32-0AA0	--	--
	125	125	1250	3VJ1012-0DA32-0AA0	3VJ1012-1DA32-0AA0	3VJ1012-3DA32-0AA0	--	--
3VJ11	25	25	600	--	--	--	3VJ1192-5DA32-0AA0	3VJ1192-7DA32-0AA0
	32	32	600	--	--	--	3VJ1103-5DA32-0AA0	3VJ1103-7DA32-0AA0
	40	40	600	--	--	--	3VJ1104-5DA32-0AA0	3VJ1104-7DA32-0AA0
	50	50	600	--	--	--	3VJ1105-5DA32-0AA0	3VJ1105-7DA32-0AA0
	63	63	630	--	--	--	3VJ1106-5DA32-0AA0	3VJ1106-7DA32-0AA0
	80	80	800	--	--	--	3VJ1108-5DA32-0AA0	3VJ1108-7DA32-0AA0
	100	100	1000	--	--	--	3VJ1110-5DA32-0AA0	3VJ1110-7DA32-0AA0
	125	125	1250	--	--	--	3VJ1112-5DA32-0AA0	3VJ1112-7DA32-0AA0
3VJ12	160	160	1600	--	3VJ1216-1DA32-0AA0	3VJ1216-3DA32-0AA0	3VJ1216-5DA32-0AA0	3VJ1216-7DA32-0AA0
	200	200	2000	--	3VJ1220-1DA32-0AA0	3VJ1220-3DA32-0AA0	3VJ1220-5DA32-0AA0	3VJ1220-7DA32-0AA0
	250	250	2500	--	3VJ1225-1DA32-0AA0	3VJ1225-3DA32-0AA0	3VJ1225-5DA32-0AA0	3VJ1225-7DA32-0AA0
3VJ13	320	320	3200	--	--	3VJ1332-3DA32-0AA0	3VJ1332-5DA32-0AA0	3VJ1332-7DA32-0AA0
	400	400	4000	--	--	3VJ1340-3DA32-0AA0	3VJ1340-5DA32-0AA0	3VJ1340-7DA32-0AA0

Note: Phase barriers and Front barriers are included in the standard packing for 3 Pole.

PRODUCT SELECTION

3 Pole Thermal Magnetic Trip Unit Adjustable Thermal Fixed Magnetic (ATFM) 415VAC + 50Hz



Frame Size	Nominal Current I_n A	Overload Protection L I_r A	Short-circuit Protection I I_i A	Order Number				
				$I_{cu} = 10\text{kA at 415V}$	$I_{cu} = 18\text{kA at 415V}$	$I_{cu} = 25\text{kA at 415V}$	$I_{cu} = 36\text{kA at 415V}$	$I_{cu} = 55\text{kA at 415V}$
3VJ10	20	$0.8 - 1 I_n$	500	3VJ1002-0DB32-0AA0	3VJ1002-1DB32-0AA0	3VJ1002-3DB32-0AA0	--	--
	25		500	3VJ1092-0DB32-0AA0	3VJ1092-1DB32-0AA0	3VJ1092-3DB32-0AA0	--	--
	32		550	3VJ1003-0DB32-0AA0	3VJ1003-1DB32-0AA0	3VJ1003-3DB32-0AA0	--	--
	40		550	3VJ1004-0DB32-0AA0	3VJ1004-1DB32-0AA0	3VJ1004-3DB32-0AA0	--	--
	50		600	3VJ1005-0DB32-0AA0	3VJ1005-1DB32-0AA0	3VJ1005-3DB32-0AA0	--	--
	63		850	3VJ1006-0DB32-0AA0	3VJ1006-1DB32-0AA0	3VJ1006-3DB32-0AA0	--	--
	80		850	3VJ1008-0DB32-0AA0	3VJ1008-1DB32-0AA0	3VJ1008-3DB32-0AA0	--	--
	100		1250	3VJ1010-0DB32-0AA0	3VJ1010-1DB32-0AA0	3VJ1010-3DB32-0AA0	--	--
	125		1250	3VJ1012-0DB32-0AA0	3VJ1012-1DB32-0AA0	3VJ1012-3DB32-0AA0	--	--
3VJ11	25	$0.8 - 1 I_n$	600				3VJ1192-5DB32-0AA0	3VJ1192-7DB32-0AA0
	32		600		--	--	3VJ1103-5DB32-0AA0	3VJ1103-7DB32-0AA0
	40		600		--	--	3VJ1104-5DB32-0AA0	3VJ1104-7DB32-0AA0
	50		600		--	--	3VJ1105-5DB32-0AA0	3VJ1105-7DB32-0AA0
	63		630		--	--	3VJ1106-5DB32-0AA0	3VJ1106-7DB32-0AA0
	80		800		--	--	3VJ1108-5DB32-0AA0	3VJ1108-7DB32-0AA0
	100		1000		--	--	3VJ1110-5DB32-0AA0	3VJ1110-7DB32-0AA0
125	1250		--	--	3VJ1112-5DB32-0AA0	3VJ1112-7DB32-0AA0		
3VJ12	160	$0.8 - 1 I_n$	1600		3VJ1216-1DB32-0AA0	3VJ1216-3DB32-0AA0	3VJ1216-5DB32-0AA0	3VJ1216-7DB32-0AA0
	200		2000		3VJ1220-1DB32-0AA0	3VJ1220-3DB32-0AA0	3VJ1220-5DB32-0AA0	3VJ1220-7DB32-0AA0
	250		2500		3VJ1225-1DB32-0AA0	3VJ1225-3DB32-0AA0	3VJ1225-5DB32-0AA0	3VJ1225-7DB32-0AA0
3VJ13	320	$0.8 - 1 I_n$	3200			3VJ1332-3DB32-0AA0	3VJ1332-5DB32-0AA0	3VJ1332-7DB32-0AA0
	400		4000			3VJ1340-3DB32-0AA0	3VJ1340-5DB32-0AA0	3VJ1340-7DB32-0AA0

Note: Phase barriers and Front barriers are included in the standard packing for 3 Pole.

PRODUCT SELECTION

4 Pole Thermal Magnetic Trip Unit Fixed Thermal Fixed Magnetic (FTFM)

415VAC + 50Hz



Frame Size	Nominal Current I_n A	Overload Protection L I_r A	Short-circuit Protection I I_i A	Order Number				
				$I_{cu} = 10kA$ at 415V	$I_{cu} = 18kA$ at 415V	$I_{cu} = 25kA$ at 415V	$I_{cu} = 36kA$ at 415V	$I_{cu} = 55kA$ at 415V
3VJ10	20	20	500	3VJ1002-0EA42-0AA0	3VJ1002-1EA42-0AA0	3VJ1002-3EA42-0AA0	--	--
	25	25	500	3VJ1092-0EA42-0AA0	3VJ1092-1EA42-0AA0	3VJ1092-3EA42-0AA0	--	--
	32	32	550	3VJ1003-0EA42-0AA0	3VJ1003-1EA42-0AA0	3VJ1003-3EA42-0AA0	--	--
	40	40	550	3VJ1004-0EA42-0AA0	3VJ1004-1EA42-0AA0	3VJ1004-3EA42-0AA0	--	--
	50	50	600	3VJ1005-0EA42-0AA0	3VJ1005-1EA42-0AA0	3VJ1005-3EA42-0AA0	--	--
	63	63	850	3VJ1006-0EA42-0AA0	3VJ1006-1EA42-0AA0	3VJ1006-3EA42-0AA0	--	--
	80	80	850	3VJ1008-0EA42-0AA0	3VJ1008-1EA42-0AA0	3VJ1008-3EA42-0AA0	--	--
	100	100	1250	3VJ1010-0EA42-0AA0	3VJ1010-1EA42-0AA0	3VJ1010-3EA42-0AA0	--	--
	125	125	1250	3VJ1012-0EA42-0AA0	3VJ1012-1EA42-0AA0	3VJ1012-3EA42-0AA0	--	--
3VJ11	25	25	600	--	--	--	3VJ1192-5EA42-0AA0	3VJ1192-7EA42-0AA0
	32	32	600	--	--	--	3VJ1103-5EA42-0AA0	3VJ1103-7EA42-0AA0
	40	40	600	--	--	--	3VJ1104-5EA42-0AA0	3VJ1104-7EA42-0AA0
	50	50	600	--	--	--	3VJ1105-5EA42-0AA0	3VJ1105-7EA42-0AA0
	63	63	630	--	--	--	3VJ1106-5EA42-0AA0	3VJ1106-7EA42-0AA0
	80	80	800	--	--	--	3VJ1108-5EA42-0AA0	3VJ1108-7EA42-0AA0
	100	100	1000	--	--	--	3VJ1110-5EA42-0AA0	3VJ1110-7EA42-0AA0
	125	125	1250	--	--	--	3VJ1112-5EA42-0AA0	3VJ1112-7EA42-0AA0
3VJ12	160	160	1600	--	3VJ1216-1EA42-0AA0	3VJ1216-3EA42-0AA0	3VJ1216-5EA42-0AA0	3VJ1216-7EA42-0AA0
	200	200	2000	--	3VJ1220-1EA42-0AA0	3VJ1220-3EA42-0AA0	3VJ1220-5EA42-0AA0	3VJ1220-7EA42-0AA0
	250	250	2500	--	3VJ1225-1EA42-0AA0	3VJ1225-3EA42-0AA0	3VJ1225-5EA42-0AA0	3VJ1225-7EA42-0AA0
3VJ13	320	320	3200	--	--	3VJ1332-3EA42-0AA0	3VJ1332-5EA42-0AA0	3VJ1332-7EA42-0AA0
	400	400	4000	--	--	3VJ1340-3EA42-0AA0	3VJ1340-5EA42-0AA0	3VJ1340-7EA42-0AA0

Note: Phase barriers and Front barriers are included in the standard packing for 4 Pole.

PRODUCT SELECTION

4 Pole Thermal Magnetic Trip Unit Adjustable Thermal Fixed Magnetic (ATFM)

415VAC + 50Hz



3VJ10

3VJ11

3VJ12

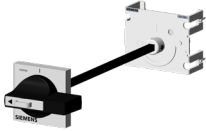

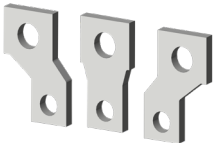
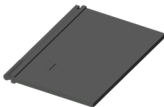
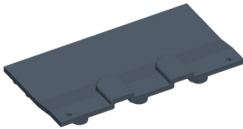

3VJ13

Frame Size	Nominal Current I_n A	Overload Protection L I_r A	Short-circuit Protection I I_i A	Order Number				
				$I_{cu} = 10kA$ at 415V	$I_{cu} = 18kA$ at 415V	$I_{cu} = 25kA$ at 415V	$I_{cu} = 36kA$ at 415V	$I_{cu} = 55kA$ at 415V
3VJ10	20	$0.8 - 1 I_n$	500	3VJ1002-0EB42-0AA0	3VJ1002-1EB42-0AA0	3VJ1002-3EB42-0AA0	--	--
	25		500	3VJ1092-0EB42-0AA0	3VJ1092-1EB42-0AA0	3VJ1092-3EB42-0AA0	--	--
	32		550	3VJ1003-0EB42-0AA0	3VJ1003-1EB42-0AA0	3VJ1003-3EB42-0AA0	--	--
	40		550	3VJ1004-0EB42-0AA0	3VJ1004-1EB42-0AA0	3VJ1004-3EB42-0AA0	--	--
	50		600	3VJ1005-0EB42-0AA0	3VJ1005-1EB42-0AA0	3VJ1005-3EB42-0AA0	--	--
	63		850	3VJ1006-0EB42-0AA0	3VJ1006-1EB42-0AA0	3VJ1006-3EB42-0AA0	--	--
	80		850	3VJ1008-0EB42-0AA0	3VJ1008-1EB42-0AA0	3VJ1008-3EB42-0AA0	--	--
	100		1250	3VJ1010-0EB42-0AA0	3VJ1010-1EB42-0AA0	3VJ1010-3EB42-0AA0	--	--
	125		1250	3VJ1012-0EB42-0AA0	3VJ1012-1EB42-0AA0	3VJ1012-3EB42-0AA0	--	--
3VJ11	25	$0.8 - 1 I_n$	600				3VJ1192-5EB42-0AA0	3VJ1192-7EB42-0AA0
	32		600	--	--	3VJ1103-5EB42-0AA0	3VJ1103-7EB42-0AA0	
	40		600	--	--	3VJ1104-5EB42-0AA0	3VJ1104-7EB42-0AA0	
	50		600	--	--	3VJ1105-5EB42-0AA0	3VJ1105-7EB42-0AA0	
	63		630	--	--	3VJ1106-5EB42-0AA0	3VJ1106-7EB42-0AA0	
	80		800	--	--	3VJ1108-5EB42-0AA0	3VJ1108-7EB42-0AA0	
	100		1000	--	--	3VJ1110-5EB42-0AA0	3VJ1110-7EB42-0AA0	
125	1250	--	--	3VJ1112-5EB42-0AA0	3VJ1112-7EB42-0AA0			
3VJ12	160	$0.8 - 1 I_n$	1600		3VJ1216-1EB42-0AA0	3VJ1216-3EB42-0AA0	3VJ1216-5EB42-0AA0	3VJ1216-7EB42-0AA0
	200		2000		3VJ1220-1EB42-0AA0	3VJ1220-3EB42-0AA0	3VJ1220-5EB42-0AA0	3VJ1220-7EB42-0AA0
	250		2500		3VJ1225-1EB42-0AA0	3VJ1225-3EB42-0AA0	3VJ1225-5EB42-0AA0	3VJ1225-7EB42-0AA0
3VJ13	320	$0.8 - 1 I_n$	3200			3VJ1332-3EB42-0AA0	3VJ1332-5EB42-0AA0	3VJ1332-7EB42-0AA0
	400		4000			3VJ1340-3EB42-0AA0	3VJ1340-5EB42-0AA0	3VJ1340-7EB42-0AA0

Note: Phase barriers and Front barriers are included in the standard packing for 4 Pole.

PRODUCT ACCESSORIES

EXTERNAL

ACCESSORIES	FRAME SIZE				
	3VJ10	3VJ11	3VJ12	3VJ13	
Extended Door Mounted Rotary Operator (including 8UC handle)¹					
	3VJ9018-0HD11	3VJ9118-0HD11	3VJ9218-0HD11	3VJ9417-0HD11	
Straight Terminals²					
	3VJ9011-0EC00 (1P)	--	--	--	
Spreader Terminals³					
	2P	3VJ9012-0ED00	3VJ9112-0ED00	3VJ9212-0ED00	--
	3P	3VJ9013-0ED00	3VJ9113-0ED00	3VJ9213-0ED00	3VJ9313-0ED00
	4P	3VJ9014-0ED00	3VJ9114-0ED00	3VJ9214-0ED00	3VJ9314-0ED00
Phase Barriers⁴					
	3VJ9018-0CA00	3VJ9218-0CA00	3VJ9218-0CA00	3VJ9417-0CA00	
Terminal Covers⁵					
	1P	3VJ9011-0CJ10	--	--	--
	3P	3VJ9016-0CJ30	3VJ9116-0CJ30	3VJ9216-0CJ30	3VJ9413-0CJ30
	4P	3VJ9014-0CJ40	3VJ9114-0CJ40	3VJ9214-0CJ40	3VJ9414-0CJ40
Toggle handle extension⁶					
	--	--	--	3VJ9417-0DH10	

¹ 1 set contains rotary mechanism, coupler, shaft and 8UC handle. Rotary operators are not available for 1P 3VJ MCCBs.

² Straight Terminals: 1 set = 2 pieces.

³ Spreader Terminal: 1 set = 3 pieces for 3-pole and 4pieces in case of 4-pole.


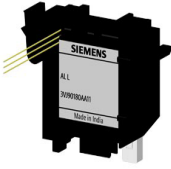

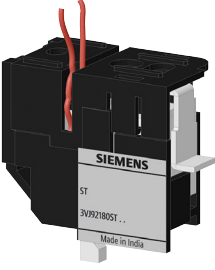
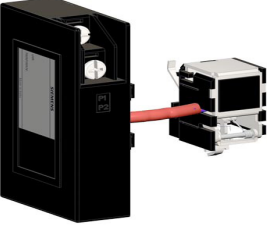
⁴ 1 set contains 2 phase barriers.

⁵ 1 set contains 2 terminal covers (top & bottom).

⁶ Toggle handle extension is included in the standard packing of 3VJ13 (VJ1 400) MCCB.

PRODUCT ACCESSORIES

INTERNAL

ACCESSORIES	FRAME SIZE				
	3VJ10	3VJ11	3VJ12	3VJ13	
AUX Auxiliary Switch					
	L	3VJ9018-0AN11	3VJ9218-0AN11	3VJ9218-0AN11	3VJ9417-0AN11
	R	--	3VJ9218-0AN21	3VJ9218-0AN21	3VJ9417-0AN21
AL Alarm Switch					
	L	3VJ9018-0AA11	3VJ9118-0AA11	3VJ9218-0AA11	3VJ9417-0AA11
	R	--	3VJ9118-0AA21	3VJ9218-0AA21	3VJ9417-0AA21
AUX + AL Auxiliary Switch					
	L	3VJ9018-0AD11	3VJ9118-0AD11	3VJ9218-0AD11	3VJ9417-0AD11
	R	--	3VJ9118-0AD21	3VJ9218-0AD21	3VJ9417-0AD21
STL Shunt Trip (Right)					
	24V DC		3VJ9218-0ST11		3VJ9417-0ST21
	48V DC		3VJ9218-0ST12		3VJ9417-0ST22
	110V DC		3VJ9218-0ST15		3VJ9417-0ST25
	110V AC		3VJ9218-0ST35		3VJ9417-0ST25
	220V AC		3VJ9218-0ST36		3VJ9417-0ST36
	415V AC		3VJ9218-0ST37		3VJ9417-0ST37
UVR Under Voltage Release (Left)					
	24V DC		3VJ9218-0UV11		--
	48V DC		3VJ9218-0UV12		--
	220V AC	--	3VJ9218-0UV36		3VJ9417-0UV36
	415V AC		3VJ9218-0UV37		3VJ9417-0UV37

Note: Internal accessories are available only for 2P, 3P & 4P MCCBs

3VJ Series Product Brochure 2021

Published by
Siemens Malaysia Sdn Bhd

Smart Infrastructure
Electrical Products (EP)
Cp Tower, 11, Jalan 16/11
46350 Petaling Jaya, Selangor
Malaysia

Attach business card here

Subject to changes and errors.
The information given in this document only contains general descriptions and/or performance features which may not always specifically reflect those described, or which may undergo modification in the course of further development of the products. The requested performance features are binding only when they are expressly agreed upon in the concluded contract.

© Siemens 2021



Visit
Industry
Mall

